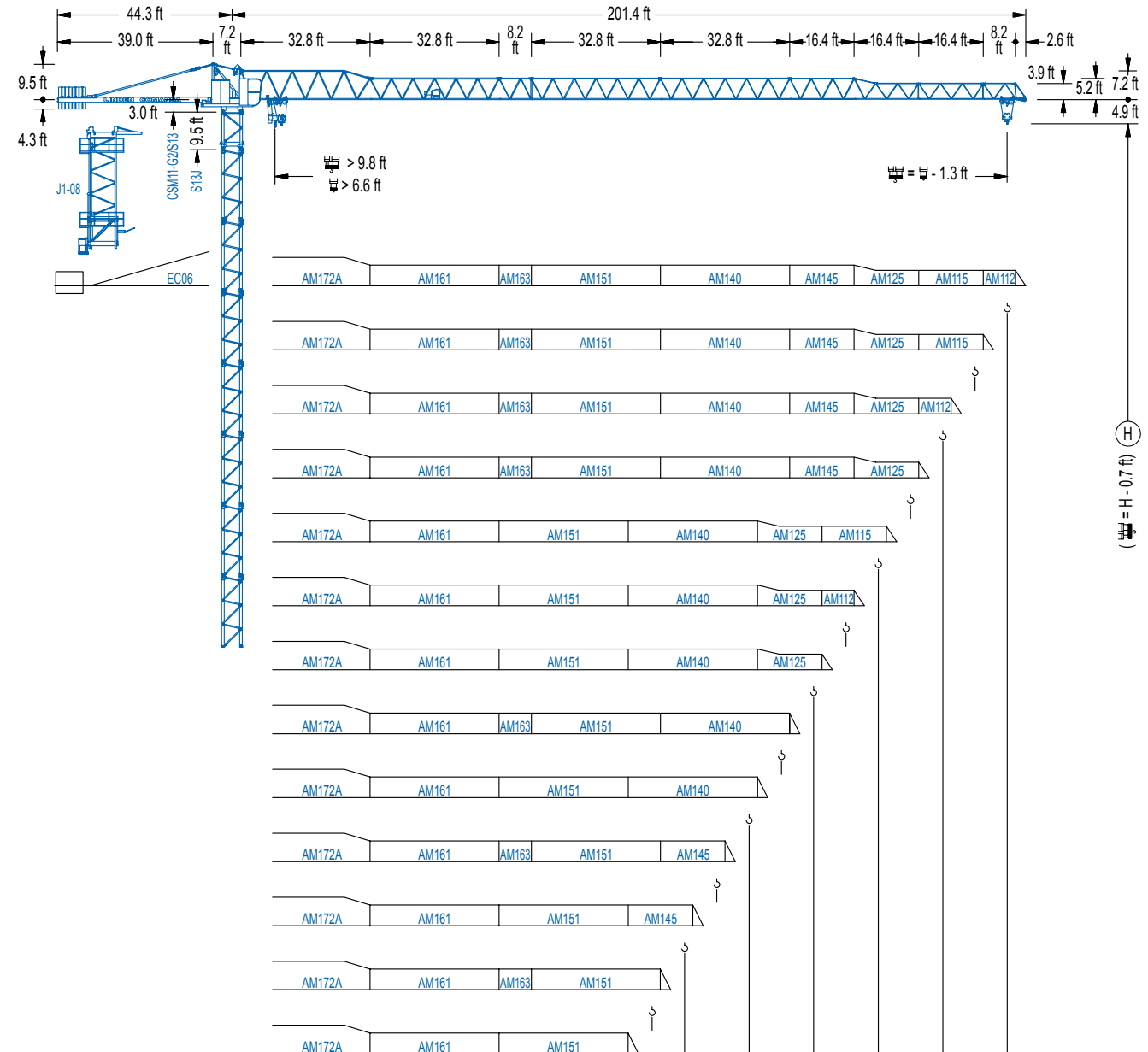


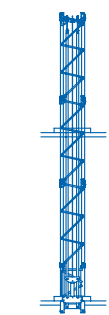
LC 1100

11 LC 132

13,230 lb



LC 1100



R	98.4	106.6	114.8	123.0	131.2	139.4	147.6	155.8	164.0	172.2	180.4	188.6	196.9	ft
	9,260	8,490	8,050	7,500	6,940	6,610	5,510	5,180	4,520	4,410	3,860	3,090	2,650	lb
	10,190	9,330	8,860	8,250	7,630	7,140	6,060	5,690	4,960	4,850	4,230	3,400	2,910	lb

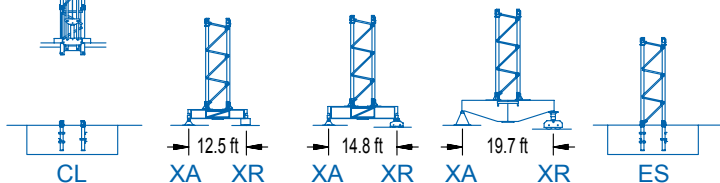


DIAGRAMA DE CARGAS

Load chart / Diagramme de charges / Lastdiagramm / Diagramma di carico / Диаграмма распределения нагрузки

R (ft)																				
196.9	47.9 13,230	55.8 11,000	65.6 9,020	75.5 7,560	83.7 6,610	93.2 6,610	98.4 6,190	106.6 5,640	114.8 5,180	123.0 4,760	131.2 4,410	139.4 4,100	147.6 3,810	155.8 3,570	164.0 3,350	172.2 3,150	180.4 2,950	188.6 2,800	196.9 2,650	ft lb
188.6	51.2 13,230	55.8 11,970	65.6 9,830	75.5 8,290	82.0 7,450	89.9 6,610	100.4 6,610	106.6 6,150	114.8 5,640	123.0 5,200	131.2 4,830	139.4 4,500	147.6 4,190	155.8 3,920	164.0 3,680	172.2 3,460	180.4 3,260	188.6 3,090	ft lb	
180.4	58.4 13,230	65.6 11,490	75.5 9,700	82.0 8,750	89.9 7,610	98.4 6,970	106.6 6,610	114.8 6,100	123.0 6,080	131.2 5,640	139.4 5,270	147.6 4,920	155.8 4,610	164.0 4,340	172.2 4,080	180.4 3,860	ft lb			
172.2	61.7 13,230	65.6 12,320	75.5 10,430	82.0 9,440	89.9 8,200	98.4 7,520	106.6 6,920	114.8 6,610	123.0 6,610	131.2 6,080	139.4 5,670	147.6 5,290	155.8 4,960	164.0 4,670	172.2 4,410	ft lb				
164.0	60.0 13,230	65.6 11,930	75.5 10,080	82.0 9,100	89.9 7,910	98.4 7,250	106.6 6,610	114.8 6,610	123.0 6,330	131.2 5,890	139.4 5,470	147.6 5,110	155.8 4,810	164.0 4,520	ft lb					
155.8	63.6 13,230	65.6 10,850	75.5 9,810	82.0 8,530	89.9 7,830	98.4 7,230	106.6 6,610	114.8 6,610	123.0 6,330	131.2 5,910	139.4 5,510	147.6 5,180	ft lb							
147.6	67.1 13,230	75.5 10,820	82.0 9,790	89.9 8,510	98.4 7,800	106.6 7,210	114.8 6,610	123.0 6,330	131.2 5,890	139.4 5,510	ft lb									
139.4	77.1 13,230	82.0 12,320	91.9 10,760	98.4 9,920	106.6 9,170	114.8 8,200	123.0 7,650	131.2 6,610	139.4 6,610	ft lb										
131.2	76.4 13,230	82.0 12,170	91.9 10,630	98.4 9,790	106.6 9,060	114.8 8,110	123.0 7,560	131.2 6,940	ft lb											
123.0	76.1 13,230	82.0 12,100	91.9 10,580	98.4 9,720	106.6 8,990	114.8 8,050	123.0 7,500	ft lb												
114.8	75.1 13,230	82.0 11,900	91.9 10,410	98.4 9,570	106.6 8,860	114.8 8,050	ft lb													
106.6	72.8 13,230	82.0 11,460	91.9 10,010	98.4 9,220	106.6 8,490	ft lb														
98.4	71.9 13,230	82.0 11,330	91.9 9,900	97.1 9,260	ft lb															

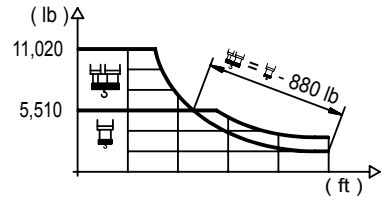
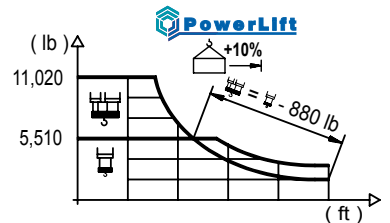


DIAGRAMA DE CARGAS POWERLIFT

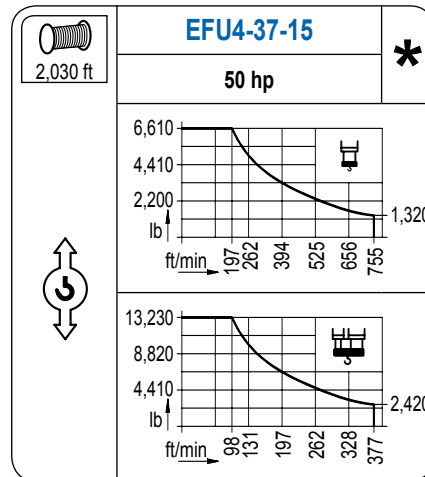
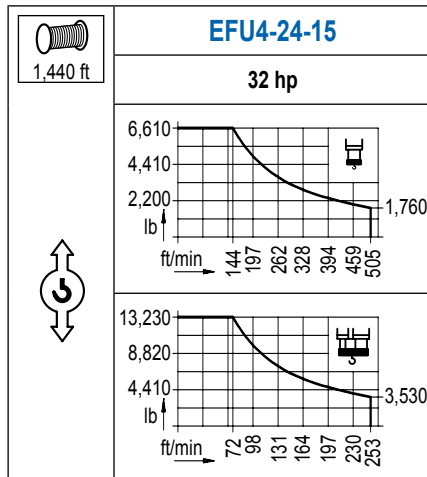
Load chart PowerLift / Diagramme de charges PowerLift / Lastdiagramm PowerLift / Diagramma di carico PowerLift / Диаграмма распределения нагрузки PowerLift

R (ft)																				
196.9	50.2 13,230	59.1 10,870	65.6 9,550	75.5 8,020	82.0 7,230	87.9 6,610	100.1 6,610	106.6 6,130	114.8 5,640	123.0 5,200	131.2 4,810	139.4 4,480	147.6 4,170	155.8 3,900	164.0 3,660	172.2 3,440	180.4 3,260	188.6 3,090	196.9 2,910	ft lb
188.6	54.1 13,230	59.1 11,900	65.6 10,490	75.5 8,840	82.0 7,960	89.9 6,900	94.8 6,610	107.9 6,610	114.8 6,170	123.0 5,690	131.2 5,270	139.4 4,920	147.6 4,590	155.8 4,300	164.0 4,030	172.2 3,790	180.4 3,590	188.6 3,400	ft lb	
180.4	61.7 13,230	65.6 12,280	75.5 10,410	82.0 9,390	89.9 8,160	98.4 7,500	106.6 6,770	108.6 6,610	123.4 6,610	131.2 6,170	139.4 5,750	147.6 5,380	155.8 5,050	164.0 4,740	172.2 4,480	180.4 4,230	ft lb			
172.2	65.9 13,230	75.5 11,240	82.0 10,190	89.9 8,860	98.4 8,130	106.6 7,360	115.8 6,610	123.0 6,610	131.9 6,460	139.4 6,220	147.6 5,820	155.8 5,470	164.0 5,140	172.2 4,850	ft lb					
164.0	64.3 13,230	75.5 10,910	82.0 9,880	89.9 8,600	98.4 7,890	106.6 7,100	112.9 6,610	128.0 6,610	131.2 6,440	139.4 6,000	147.6 5,620	155.8 5,270	164.0 4,960	ft lb						
155.8	68.2 13,230	75.5 11,730	82.0 10,630	89.9 9,260	98.4 8,510	106.6 7,690	114.8 7,010	120.1 6,610	136.8 6,610	139.4 6,460	147.6 6,060	155.8 5,690	ft lb							
147.6	68.2 13,230	75.5 11,730	82.0 10,630	89.9 9,260	98.4 8,510	106.6 7,720	114.8 7,010	120.1 6,610	136.8 6,610	139.4 6,480	147.6 6,060	ft lb								
139.4	82.3 13,230	91.9 11,750	98.4 10,820	106.6 9,830	114.8 8,990	123.0 8,250	131.2 7,630	138.1 7,140	ft lb											
131.2	82.3 13,230	91.9 11,620	98.4 10,710	106.6 9,720	114.8 8,880	123.0 8,160	129.9 7,630	ft lb												
123.0	82.0 13,230	91.9 11,570	98.4 10,670	106.6 9,700	114.8 8,860	121.7 8,250	ft lb													
114.8	81.0 13,230	91.9 11,440	98.4 10,540	106.6 9,570	113.5 8,860	ft lb														
106.6	78.4 13,230	91.9 11,000	98.4 10,120	105.3 9,330	ft lb															
98.4	77.8 13,230	91.9 10,890	97.1 10,190	ft lb																



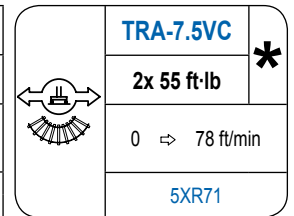
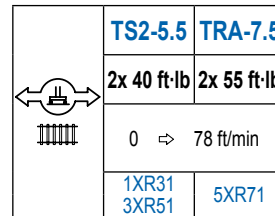
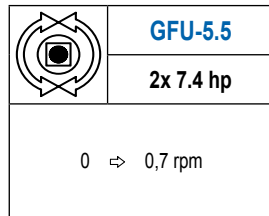
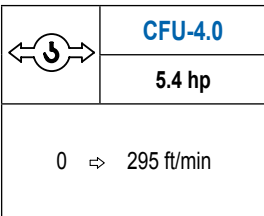
MECANISMOS

Mechanisms / Mécanismes / Antriebe / Meccanismi / Механизмы



MECANISMOS

Mechanisms / Mécanismes / Antriebe / Meccanismi / Механизмы



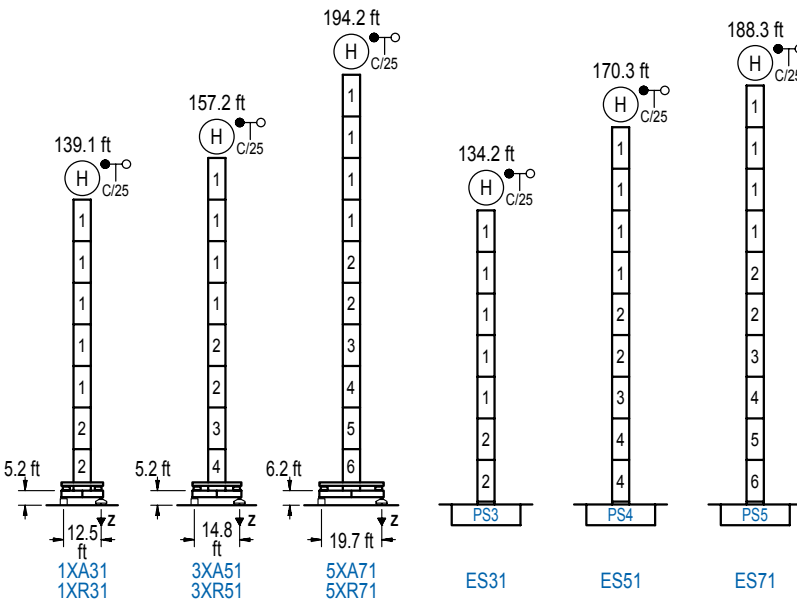
POTENCIA / POWER / PUISSANCE / LEISTUNG / POTENZA / МОЩНОСТЬ				Tensión de alimentación / Operating voltage / Tension de service / Betriebsspannung / Tensione di alimentazione / Напряжение источника питания	Generador / Generator / Générateur / Generator / Generatore / Генератор
Elevación / Hoist / Levage / Hub / Sollevamento / Тип механизма (подъем)	Carro / Trolley / Chariot / Laufkatze / Carrelo / Грузовая тележка	Giro / Slewing / Rotation / Drehbewegung / Rotazione / Поворот	Traslación / Travel / Translation / Verfahrbewegung / Traslazione / Ход	480 V 3ph 60 Hz	75 kVA
EFU4-24-15	CFU-4.0	(2x) GFU-5.5	(2x) TS2-5.5	60 Hz	105 kVA
EFU4-37-15			(2x) TRA-7.5		

Optional / Optional / En option / Kaufoption / Opzionale / Опционально

ALTURAS BAJO GANCHO

Heights under hook / Hauteurs sous crochet / Hakenhöhen / Altezza sotto gancio / Высота под крюком

∅ 5.2 ft

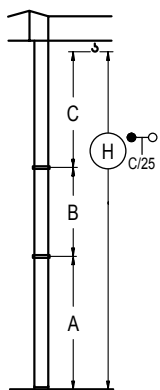


n°	Ref.	∅	h
1	S12	5.2	18.0
2	S13	5.2	18.0
3	TS14	5.2	18.0
4	S14	5.2	18.0
5	TS15	5.2	18.0
6	S15	5.2	18.0

Z máx.	En servicio / In operation / En service / In Betrieb / In servizio / При работе	1XR31.. 152 kip 3XR51.. 146 kip 5XR71.. 132 kip
	Fuera de servicio / Out of service / Hors service / Ausser Betrieb / Fuori servizio / В стационарном состоянии	1XR31.. 185 kip 3XR51.. 203 kip 5XR71.. 198 kip

GRÚA ARRIOSTRADA

Braced crane / Grue à entretoisement / Abgespannter Kran / Gru ancorata / Нарастиваемый кран



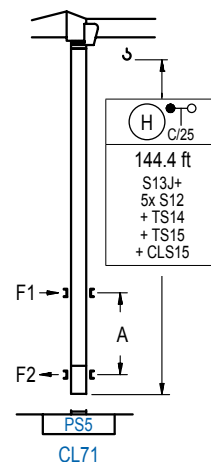
	1XA31	3XA51	5XA71
A max	95.5	113.5	150.6
* B max	-	72.2	-
* C max	115.8	115.8	115.8
H max	211.3	283.5	301.5

	ES31	ES51	ES71
A max	90.6	126.6	144.7
* B max	-	72.2	-
* C max	115.8	115.8	115.8
H max	206.4	278.5	260.5

* Con S13; * With S13; * Avec S13; * Mit S13;
* Con S13; * C S13

GRÚA TREPADORA

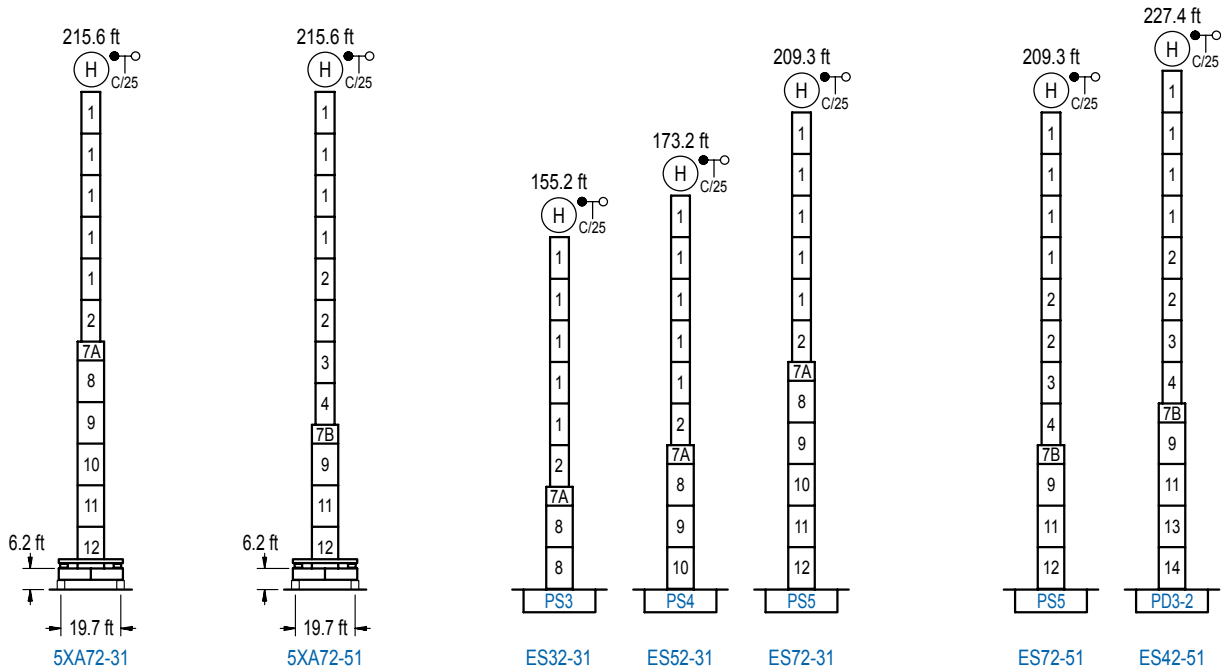
Internal climbing crane / Grue avec cage de télescopage intérieure / Kran mit klettern im Gebäude / Gru in rampante in cavedio / Кран с самоподъемом



n°	Ref.	∅	h
1	S12	5.2	18.0
3	TS14	5.2	18.0
5	TS15	5.2	18.0
23	CLS15	5.2	10.2

Otras zonas de viento, alturas superiores, arriostramientos o trepado interno consultar / Other wind zones, additional hook heights, tie frames or internal climbing on request / Autres zones de vent, des hauteurs supplémentaires, entretoisements ou grues avec cage de télescopage intérieure, sur demande / Andere Windzonen, weitere Hakenhöhen, Abspannungen zum Gebäude oder Klettern im Gebäude auf Anfrage / Per zone con velocità del vento particolari, altezze superiori, ancoraggi o rampante in cavedio, consultare il fabbricante / При других ветренных зонах, при большой высоте, привязках к зданию или наращивании крана внутри здания проконсультируйтесь с нами

LC 1100



n°	Ref.	∅	h	n°	Ref.	∅	h	n°	Ref.	∅	h
1	S12	5.2	18.0	6	S15	5.2	18.0	10	S24	6.6	18.0
2	S13	5.2	18.0	7A	TMS23/PMS3	6.6	3.3	11	TS25	6.6	18.0
3	TS14	5.2	18.0	7B	TMS23/PMS4	6.6	3.3	12	S25	6.6	18.0
4	S14	5.2	18.0	8	S23	6.6	18.0	13	TD23A	6.6	18.0
5	TS15	5.2	18.0	9	TS24	6.6	18.0	14	D23	6.6	18.0

Otras zonas de viento o alturas superiores consultar / Other wind zones or additional hook heights on request / Autres zones de vent ou des hauteurs supplémentaires sur demande / Andere Windzonen oder weitere Hakenhöhen auf Anfrage / Per zone con velocità del vento particolari o altezze superiori consultare il fabbricante / При других ветренных зонах о при большой высоте проконсультируйтесь с нами