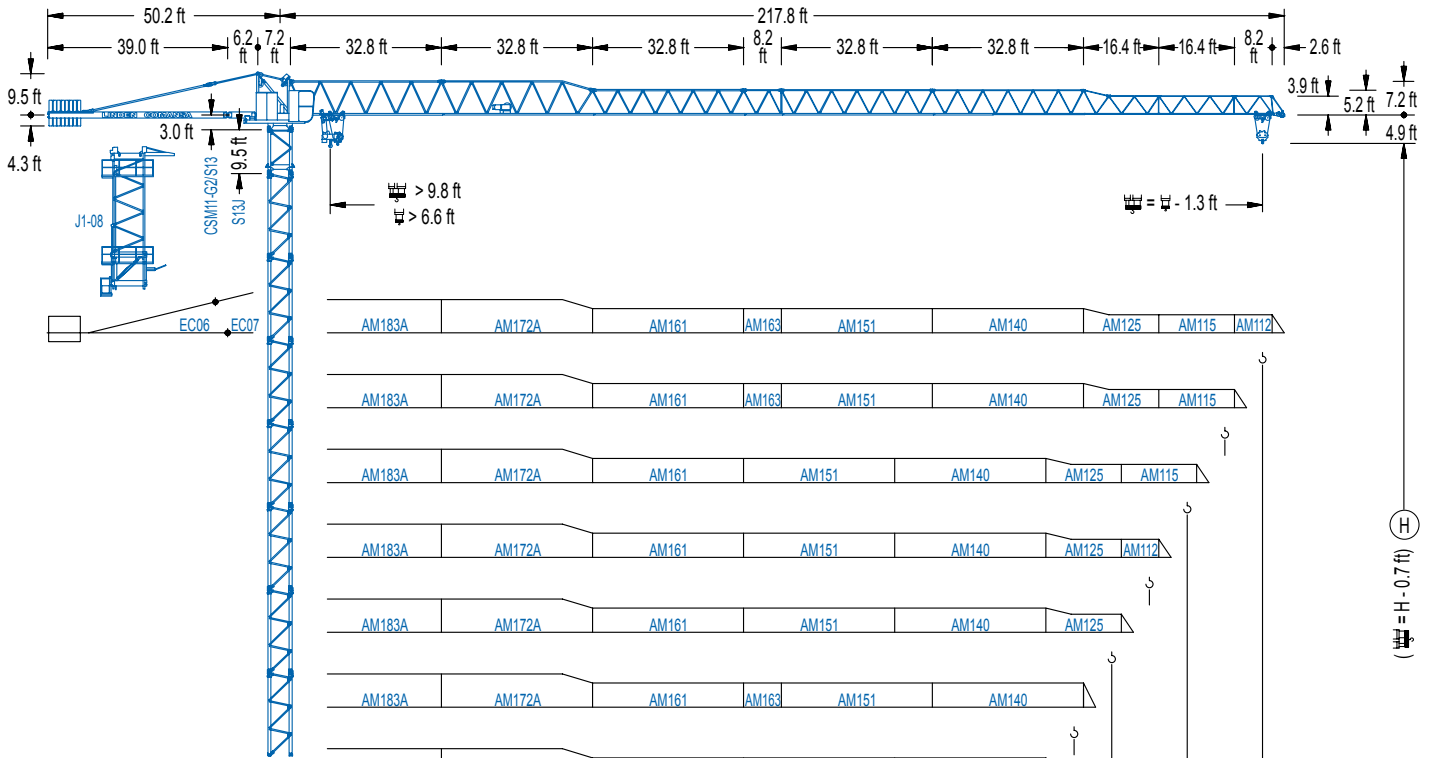


LC 1100

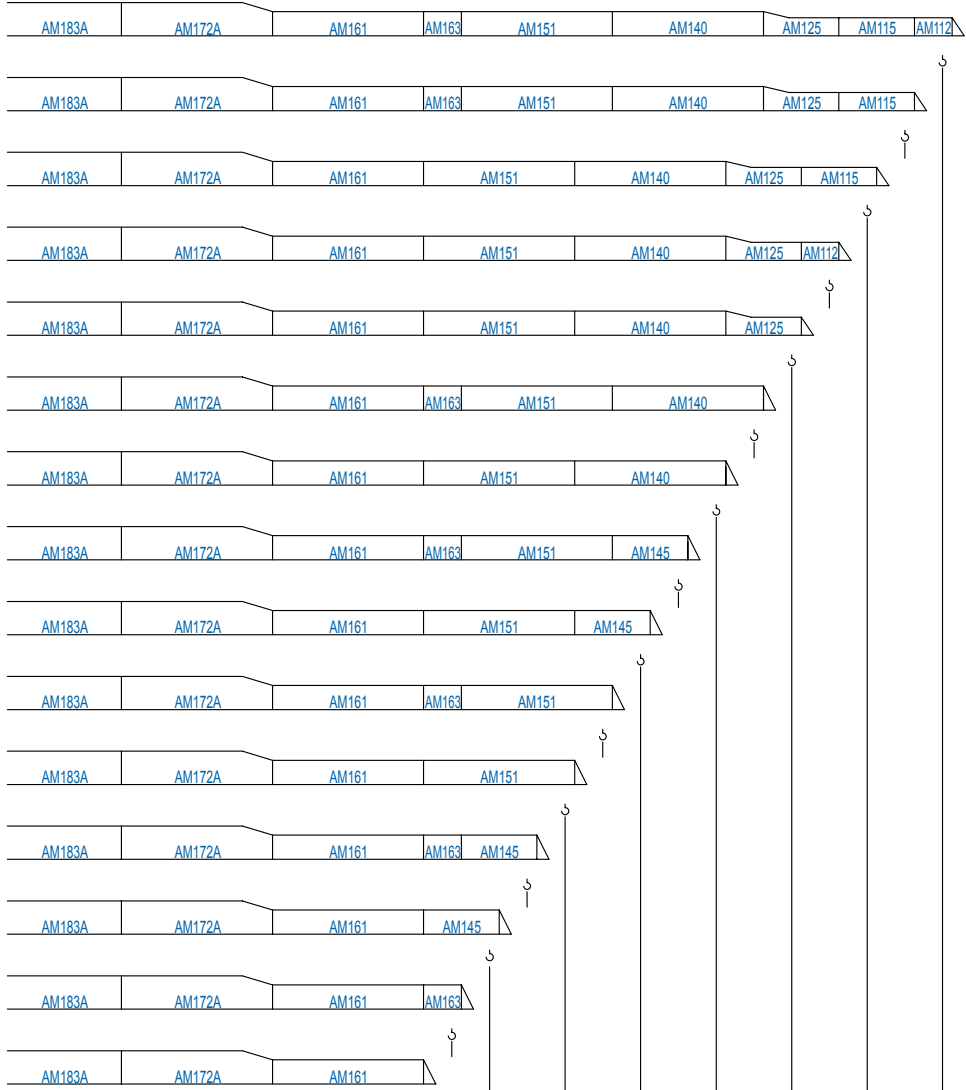
11 LC 160

17,640 lb



LC 1100

(H - H - 0.7 ft)



R	ft	lb	lb
12,370	98.4	11,240	
11,270	106.6	10,250	
10,300	114.8	9,370	
9,330	123.0	8,820	
8,820	131.2	8,710	
8,820	139.4	8,160	
8,360	147.6	7,610	
7,390	155.8	6,720	
7,030	164.0	6,390	
6,060	172.2	5,510	
5,820	180.4	5,290	
5,340	188.6	4,850	
4,850	196.9	4,410	
3,990	205.1	3,640	
3,400	213.3	3,090	

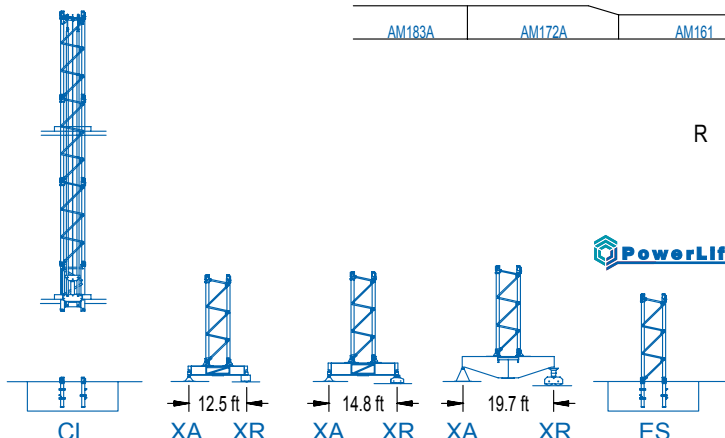


DIAGRAMA DE CARGAS

Load chart / Diagramme de charges / Lastdiagramm / Diagramma di carico / Диаграмма распределения нагрузки

R (ft)	11										12											
213.3	45.3	49.2	65.6	81.0	87.9	91.9	98.4	106.6	114.8	123.0	131.2	139.4	147.6	155.8	164.0	172.2	180.4	188.6	196.9	205.1	213.3	ft
	17,640	15,980	11,380	8,820	8,820	8,380	7,760	7,080	6,500	6,020	5,580	5,180	4,850	4,540	4,280	4,030	3,810	3,590	3,420	3,240	3,090	lb
205.1	49.5	65.6	75.5	88.3	96.1	98.4	106.6	114.8	123.0	131.2	139.4	147.6	155.8	164.0	172.2	180.4	188.6	196.9	205.1			ft
	17,640	12,610	10,690	8,820	8,820	8,580	7,850	7,210	6,660	6,190	5,780	5,400	5,070	4,760	4,500	4,250	4,030	3,840	3,640			lb
196.9	55.1	65.6	75.5	82.0	91.9	98.4	107.9	114.8	123.0	131.2	139.4	147.6	155.8	164.0	172.2	180.4	188.6	196.9				ft
	17,640	14,400	12,210	11,070	9,660	8,820	8,820	8,220	7,610	7,080	6,590	6,170	5,800	5,470	5,160	4,890	4,630	4,410				lb
188.6	57.1	65.6	75.5	82.0	91.9	102.4	111.9	114.8	123.0	131.2	139.4	147.6	155.8	164.0	172.2	180.4	188.6					ft
	17,640	14,990	12,740	11,550	10,080	8,820	8,820	8,580	7,940	7,390	6,880	6,460	6,060	5,710	5,400	5,110	4,850					lb
180.4	58.7	65.6	75.5	82.0	91.9	98.4	105.3	115.2	123.0	131.2	139.4	147.6	155.8	164.0	172.2	180.4						ft
	17,640	15,480	13,160	11,930	10,430	9,590	8,820	8,820	8,200	7,630	7,120	6,680	6,260	5,910	5,580	5,290						lb
172.2	57.7	65.6	75.5	82.0	91.9	104.3	113.8	114.8	123.0	131.2	139.4	147.6	155.8	164.0	172.2							ft
	17,640	15,260	12,960	11,750	10,270	2,200	8,820	8,750	8,090	7,520	7,030	6,590	6,190	5,840	5,510							lb
164.0	62.3	65.6	75.5	82.0	91.9	98.4	105.0	112.5	123.4	131.2	139.4	147.6	155.8	164.0								ft
	17,640	16,670	14,180	12,870	11,270	10,380	9,590	8,820	8,820	8,220	7,690	7,210	6,770	6,390								lb
155.8	62.0	65.6	75.5	82.0	91.9	98.4	105.0	111.5	122.4	131.2	139.4	147.6	155.8									ft
	17,640	16,510	14,070	12,760	11,160	10,270	9,500	8,820	8,820	8,160	7,630	7,140	6,720									lb
147.6	65.3	75.5	82.0	91.9	98.4	105.0	117.8	129.3	131.2	139.4	147.6											ft
	17,640	14,950	13,560	11,880	10,960	10,140	8,820	8,820	8,690	8,110	7,610											lb
139.4	65.6	75.5	82.0	91.9	98.4	105.0	118.1	129.9	131.2	139.4												ft
	17,640	15,010	13,620	11,930	11,000	10,190	8,820	8,820	8,730	8,160												lb
131.2	65.3	75.5	82.0	91.9	98.4	105.0	117.8	129.9	131.2													ft
	17,640	14,950	13,580	11,880	10,960	10,140	8,820	8,820	8,710													lb
123.0	65.3	75.5	82.0	91.9	98.4	105.0	117.8	123.0														ft
	17,640	14,950	13,580	11,900	10,960	10,140	8,820	8,820														lb
114.8	65.9	75.5	82.0	91.9	98.4	105.0	113.5															ft
	17,640	15,150	13,760	12,060	11,110	10,270	9,370															lb
106.6	65.9	75.5	82.0	91.9	98.4	105.3																ft
	17,640	15,150	13,760	12,040	11,110	10,250																lb
98.4	65.9	75.5	82.0	91.9	97.1																	ft
	17,640	15,080	13,690	11,990	11,240																	lb

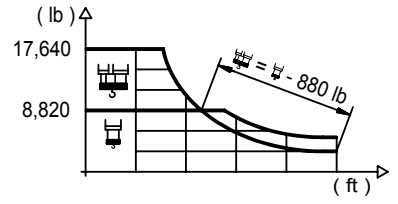
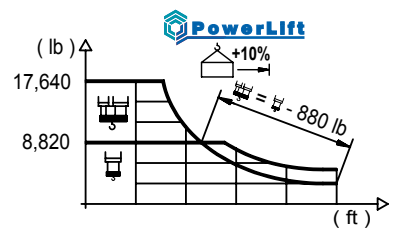


DIAGRAMA DE CARGAS POWERLIFT

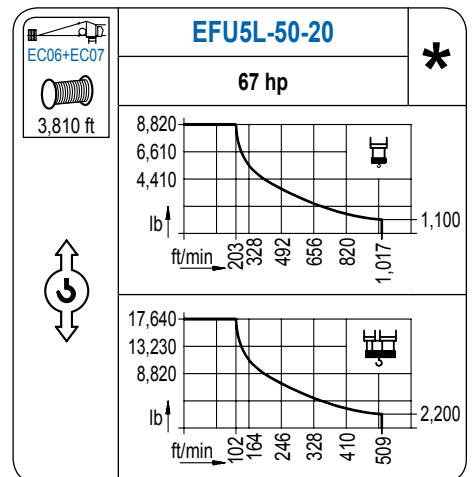
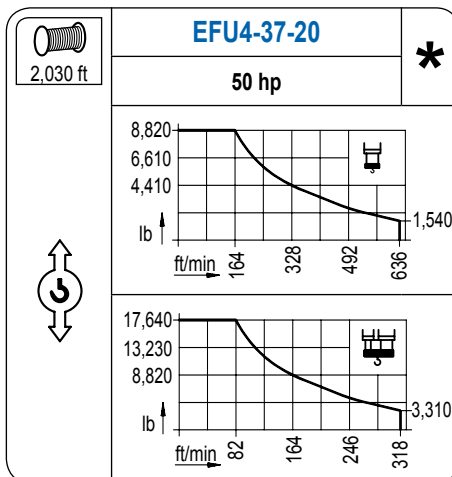
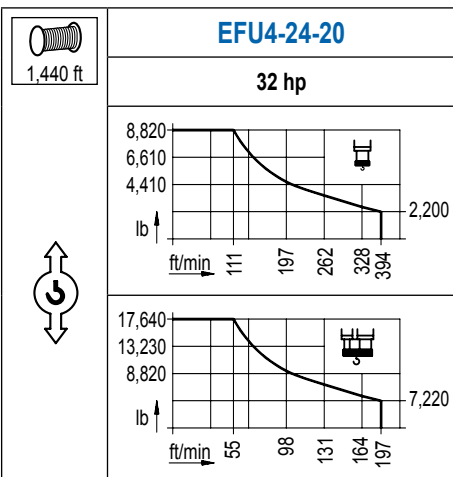
Load chart PowerLift / Diagramme de charges PowerLift / Lastdiagramm PowerLift / Diagramma di carico PowerLift / Диаграмма распределения нагрузки PowerLift

R (ft)	11										12											
213.3	47.6	59.1	65.6	75.5	85.3	94.5	98.4	106.6	114.8	123.0	131.2	139.4	147.6	155.8	164.0	172.2	180.4	188.6	196.9	205.1	213.3	ft
	17,640	13,710	12,130	10,250	8,820	8,820	8,440	7,720	7,080	6,550	6,080	5,670	5,290	4,980	4,670	4,410	4,170	3,950	3,750	3,570	3,400	lb
205.1	51.8	59.1	65.6	75.5	82.0	93.5	103.7	106.6	114.8	123.0	131.2	139.4	147.6	155.8	164.0	172.2	180.4	188.6	196.9	205.1		ft
	17,640	15,210	13,470	11,420	10,320	8,820	8,820	8,530	7,850	7,260	6,750	6,290	5,890	5,520	5,210	4,920	4,660	4,410	4,190	3,990		lb
196.9	58.4	65.6	75.5	82.0	91.9	98.4	105.3	116.8	123.0	131.2	139.4	147.6	155.8	164.0	172.2	180.4	188.6	196.9				ft
	17,640	15,450	13,140	11,930	10,410	9,590	8,820	8,820	8,310	7,740	7,230	6,770	6,360	6,000	5,670	5,370	5,100	4,850				lb
188.6	60.7	65.6	75.5	82.0	91.9	98.4	109.6	121.4	123.0	131.2	139.4	147.6	155.8	164.0	172.2	180.4	188.6					ft
	17,640	16,140	13,730	12,460	10,890	10,030	8,820	8,820	8,690	8,080	7,550	7,070	6,650	6,270	5,930	5,620	5,340					lb
180.4	62.7	65.6	75.5	82.0	91.9	98.4	106.6	112.9	125.0	131.2	139.4	147.6	155.8	164.0	172.2	180.4						ft
	17,640	16,710	14,220	12,900	11,290	10,410	9,440	8,820	8,820	8,360	7,810	7,320	6,880	6,490	6,140	5,820						lb
172.2	62.0	65.6	75.5	82.0	91.9	98.4	106.6	111.5	123.7	131.2	139.4	147.6	155.8	164.0	172.2							ft
	17,640	16,490	14,040	12,740	11,130	10,270	9,330	8,820	8,820	8,250	7,710	7,230	6,800	6,410	6,060							lb
164.0	66.9	75.5	82.0	91.9	98.4	106.6	114.8	121.1	134.2	139.4	147.6	155.8	164.0									ft
	17,640	15,390	13,980	12,260	11,290	10,270	9,390	8,820	8,820	8,440	7,920	7,450	7,030									lb
155.8	66.6	75.5	82.0	91.9	98.4	106.6	114.8	119.8	132.9	139.4	147.6	155.8										ft
	17,640	15,260	13,840	12,130	11,180	10,160	9,300	8,820	8,820	8,370	7,850	7,390										lb
147.6	70.2	75.5	82.0	91.9	98.4	106.6	114.8	123.0	126.6	140.7	147.6											ft
	17,640	16,230	14,750	12,940	11,950	10,870	9,940	9,150	8,820	8,820	8,360											lb
139.4	70.5	75.5	82.0	91.9	98.4	106.6	114.8	123.0	127.6	139.4												ft
	17,640	16,360	14,860	13,030	12,040	10,930	10,010	9,220	8,820	8,820												lb
131.2	70.5	75.5	82.0	91.9	98.4	106.6	114.8	129.9	131.2													ft
	17,640	16,290	14,810	12,990	11,990	10,890	9,990	8,820	8,820													lb
123.0	70.5	75.5	82.0	91.9	98.4	106.6	114.8	121.7														ft
	17,640	16,310	14,840	13,010	11,990	10,910	9,990	9,330														lb
114.8	71.5	75.5	82.0	91.9	98.4	106.6	113.5															ft
	17,640	16,560	15,040	13,210	12,170	11,090	10,300															lb
106.6	71.5	75.5	82.0	91.9	98.4	105.3																ft
	17,640	16,560	15,060	13,210	12,190	11,270																lb
98.4	71.2	75.5	82.0	91.9	97.1																	ft
	17,640	16,530	15,040	13,180	12,370																	lb



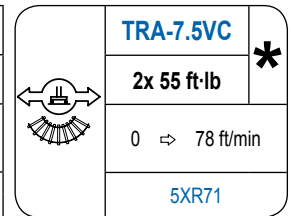
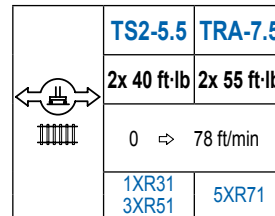
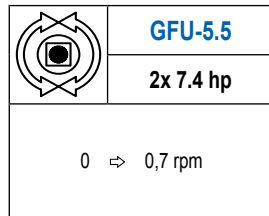
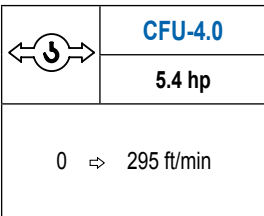
MECANISMOS

Mechanisms / Mécanismes / Antriebe / Meccanismi / Механизмы



MECANISMOS

Mechanisms / Mécanismes / Antriebe / Meccanismi / Механизмы



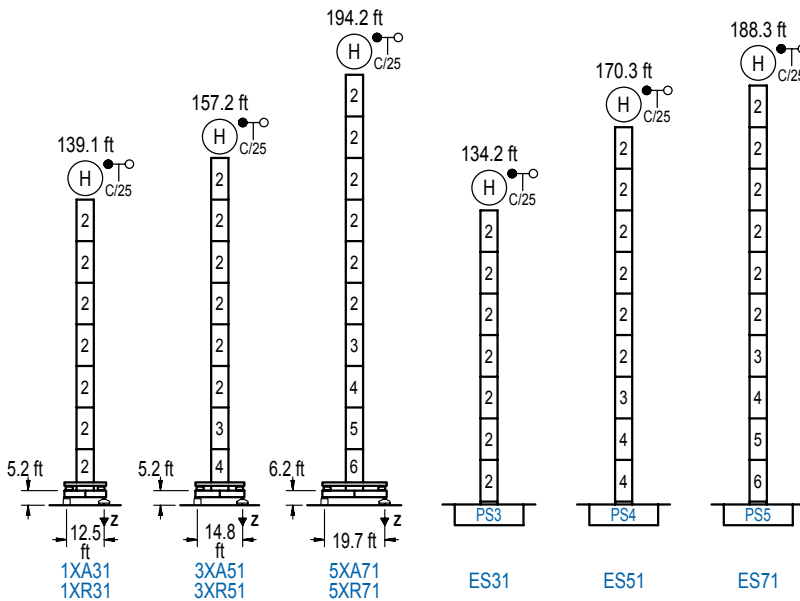
POTENCIA / POWER / PUISSANCE / LEISTUNG / POTENZA / МОЩНОСТЬ				Tensión de alimentación / Operating voltage / Tension de service / Betriebsspannung / Tensione di alimentazione / Напряжение источника питания	Generador / Generator / Générateur / Generator / Generatore / Генератор
Elevación / Hoist / Levage / Hub / Sollevamento / Тип механизма (подъем)	Carro / Trolley / Chariot / Laufkatze / Carrolo / Грузовая тележка	Giro / Slewing / Rotation / Drehbewegung / Rotazione / Поворот	Traslación / Travel / Translation / Verfahrbewegung / Traslazione / Ход		
EFU4-24-20	CFU-4.0	(2x) GFU-5.5	(2x) TS2-5.5	480 V 3ph 60 Hz	75 kVA
EFU4-37-20			(2x) TRA-7.5		105 kVA
EFU5L-50-20					125 kVA

Optional / Optional / En option / Kaufoption / Opzionale / Опционально
*

ALTURAS BAJO GANCHO

Heights under hook / Hauteurs sous crochet / Hakenhöhen / Altezza sotto gancio / Высота под крюком

∅ 5.2 ft

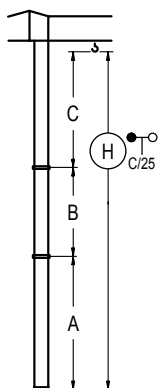


n°	Ref.	∅	h
2	S13	5.2	18.0
3	TS14	5.2	18.0
4	S14	5.2	18.0
5	TS15	5.2	18.0
6	S15	5.2	18.0

Z máx.	En servicio / In operation / En service / In Betrieb / In servizio / При работе	1XR31.. 161 kip 3XR51.. 157 kip 5XR71.. 170 kip
	Fuera de servicio / Out of service / Hors service / Ausser Betrieb / Fuori servizio / В стационарном состоянии	1XR31.. 157 kip 3XR51.. 172 kip 5XR71.. 243 kip

GRÚA ARRIOSTRADA

Braced crane / Grue à entretoisement / Abgespannter Kran / Gru ancorata / Нарастиваемый кран

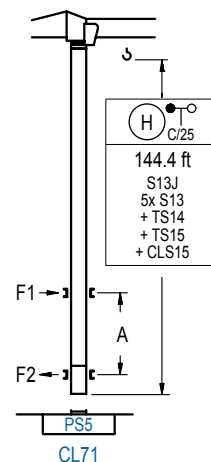


	1XA31	3XA51	5XA71
A max	95.5	113.5	150.6
B max	- 72.2	- 72.2	- 72.2
C max	115.8 115.8	115.8 115.8	115.8 115.8
H max	211.3 283.5	229.3 301.5	266.4 338.6

	ES31	ES51	ES71
A max	90.6	126.6	144.7
B max	- 72.2	- 72.2	- 72.2
C max	115.8 115.8	115.8 115.8	115.8 115.8
H max	206.4 278.5	242.5 314.6	260.5 332.7

GRÚA TREPADORA

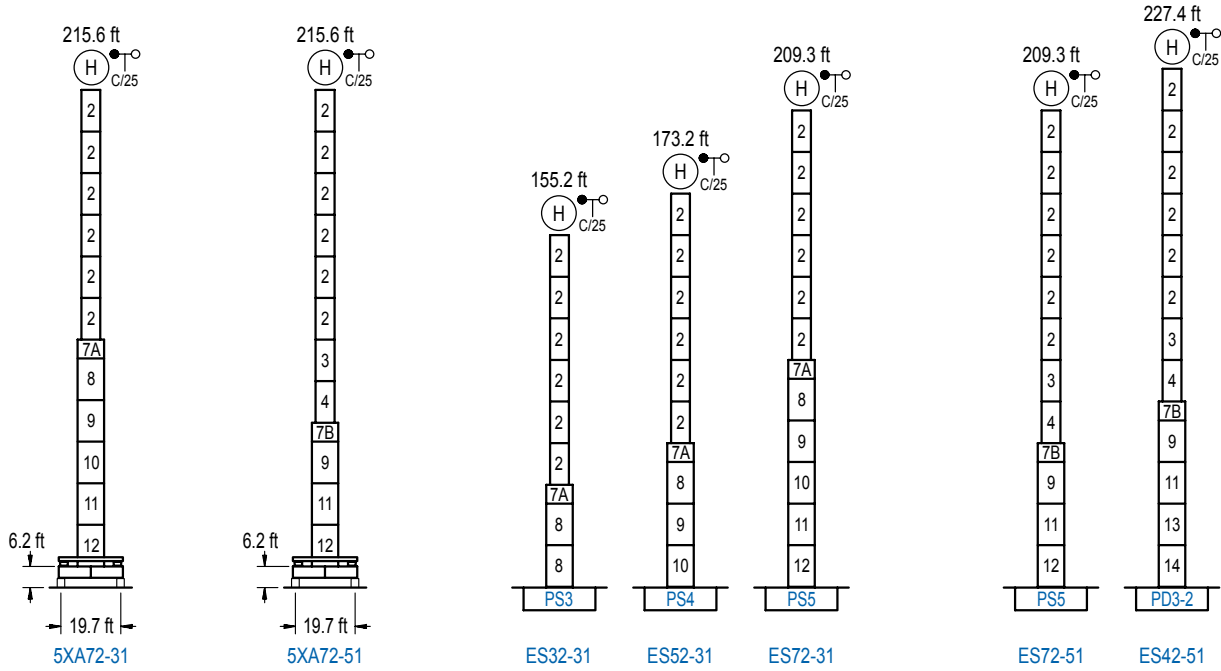
Internal climbing crane / Grue avec cage de télescopage intérieure / Kran mit klettern im Gebäude / Gru in rampante in cavedio / Кран с самоподъемом



n°	Ref.	∅	h
2	S13	5.2	18.0
3	TS14	5.2	18.0
5	TS15	5.2	18.0
23	CLS15	5.2	10.2

Otras zonas de viento, alturas superiores, arriostramientos o trepado interno consultar / Other wind zones, additional hook heights, tie frames or internal climbing on request / Autres zones de vent, des hauteurs supplémentaires, entretoisements ou grues avec cage de télescopage intérieure, sur demande / Andere Windzonen, weitere Hakenhöhen, Abspannungen zum Gebäude oder Klettern im Gebäude auf Anfrage / Per zone con velocità del vento particolari, altezze superiori, ancoraggi o rampante in cavedio, consultare il fabbricante / При других ветренных зонах, при большой высоте, привязках к зданию или наращивании крана внутри здания проконсультируйтесь с нами

LC 1100



n°	Ref.	∅	h	n°	Ref.	∅	h	n°	Ref.	∅	h
2	S13	5.2	18.0	7A	TMS23/PMS3	6.6	3.3	11	TS25	6.6	18.0
3	TS14	5.2	18.0	7B	TMS23/PMS4	6.6	3.3	12	S25	6.6	18.0
4	S14	5.2	18.0	8	S23	6.6	18.0	13	TD23A	6.6	18.0
5	TS15	5.2	18.0	9	TS24	6.6	18.0	14	D23	6.6	18.0
6	S15	5.2	18.0	10	S24	6.6	18.0				

Otras zonas de viento o alturas superiores consultar / Other wind zones or additional hook heights on request / Autres zones de vent ou des hauteurs supplémentaires sur demande / Andere Windzonen oder weitere Hakenhöhen auf Anfrage / Per zone con velocità del vento particolari o altezze superiori consultare il fabbricante / При других ветренных зонах о при большой высоте проконсультируйтесь с нами



Construcciones Metálicas COMANSA S. A.

Tel.: (34) 948 335 020 / Fax: (34) 948 330 810 / e-mail: info@comansa.com
Polígono Urbizkain E-31620 HUARTE-PAMPLONA.- SPAIN