

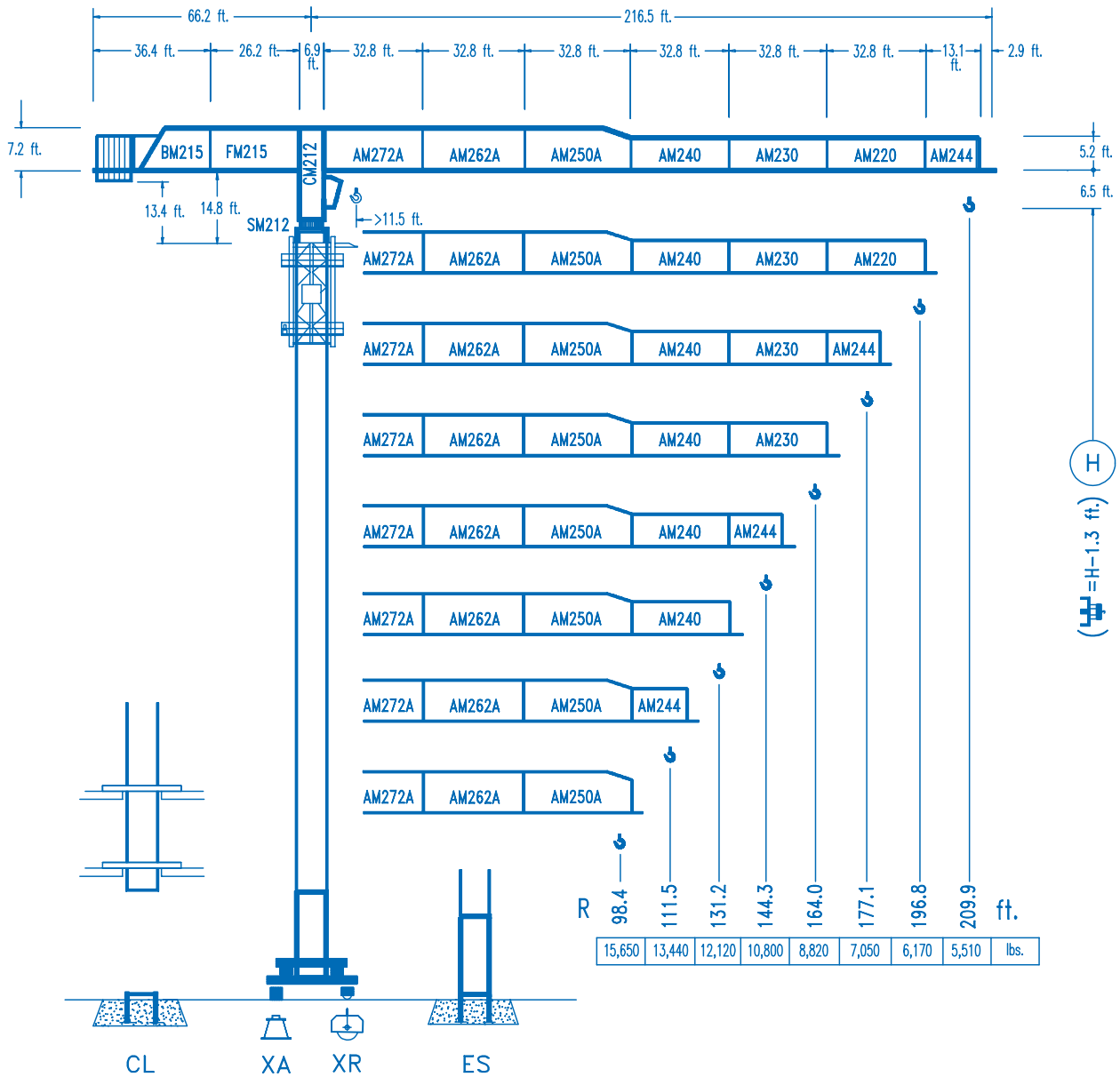


COMANSA

LINDEN 2100

21 LC 210

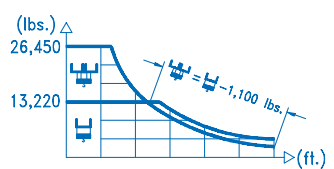
26,450 lbs.

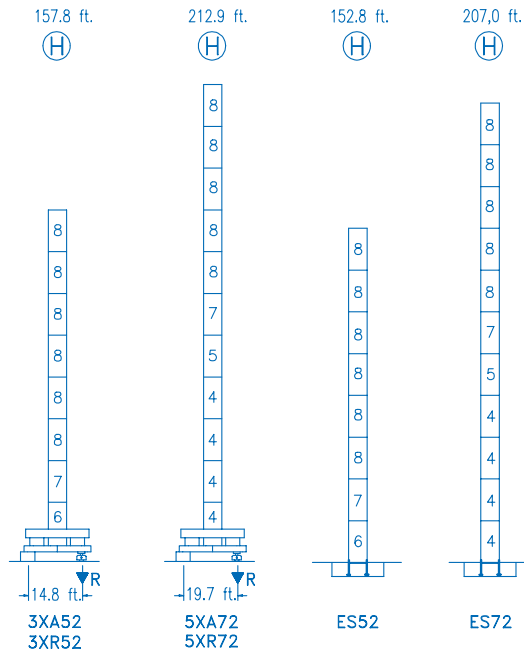


(H) = H - 1.3 ft.

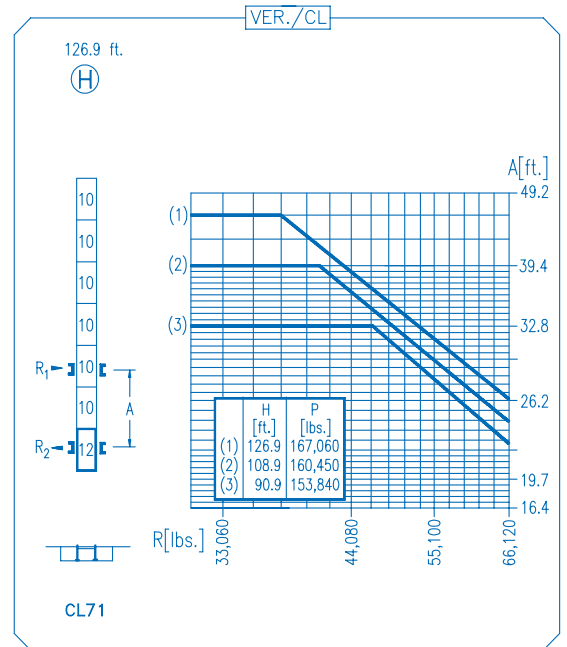
CE
DIN 15018 H1 B3

| R | ⊞ | | | | ⊞ | | | | | | | | |
|-------|--------|--------|--------|--------|--------|--------|--------|--------|-------|-------|-------|-------|------|
| 209.9 | 54.1 | 65.6 | 82.0 | 95.8 | 99.4 | 111.5 | 131.2 | 144.3 | 164.0 | 177.1 | 196.8 | 209.9 | ft. |
| | 26,450 | 21,070 | 16,070 | 13,220 | 13,220 | 11,610 | 9,640 | 8,640 | 7,430 | 6,780 | 5,960 | 5,510 | lbs. |
| 196.8 | 55.1 | 65.6 | 82.0 | 97.7 | 102.3 | 111.5 | 131.2 | 144.3 | 164.0 | 177.1 | 196.8 | | ft. |
| | 26,450 | 21,570 | 16,460 | 13,220 | 13,220 | 11,990 | 9,960 | 8,910 | 7,680 | 7,010 | 6,170 | | lbs. |
| 177.1 | 55.1 | 65.6 | 82.0 | 97.4 | 102.7 | 111.5 | 131.2 | 144.3 | 164.0 | 177.1 | | | ft. |
| | 26,450 | 21,490 | 16,400 | 13,220 | 13,220 | 12,070 | 10,020 | 8,970 | 7,730 | 7,050 | | | lbs. |
| 164.0 | 60.7 | 65.6 | 82.0 | 98.4 | 107.6 | 114.8 | 131.2 | 144.3 | 164.0 | | | | ft. |
| | 26,450 | 24,110 | 18,480 | 14,790 | 13,220 | 13,220 | 11,380 | 10,200 | 8,820 | | | | lbs. |
| 144.3 | 63.0 | 65.6 | 82.0 | 98.4 | 111.8 | 120.7 | 131.2 | 144.3 | | | | | ft. |
| | 26,450 | 25,190 | 19,330 | 15,490 | 13,220 | 13,220 | 12,030 | 10,800 | | | | | lbs. |
| 131.2 | 63.0 | 65.6 | 82.0 | 98.4 | 111.8 | 121.4 | 131.2 | | | | | | ft. |
| | 26,450 | 25,210 | 19,350 | 15,500 | 13,220 | 13,220 | 12,120 | | | | | | lbs. |
| 111.5 | 62.3 | 65.6 | 82.0 | 88.6 | 98.4 | 111.5 | | | | | | | ft. |
| | 26,450 | 24,940 | 19,130 | 17,430 | 15,330 | 13,440 | | | | | | | lbs. |
| 98.4 | 62.0 | 65.6 | 82.0 | 88.6 | 98.4 | | | | | | | | ft. |
| | 26,450 | 24,780 | 19,010 | 17,320 | 15,650 | | | | | | | | lbs. |





| N | Ref. | Ø | h |
|----|-------|-----|------|
| 4 | S25 | 6.6 | 18.0 |
| 5 | TS25 | 6.6 | 18.0 |
| 6 | S24 | 6.6 | 18.0 |
| 7 | TS24 | 6.6 | 18.0 |
| 8 | S23 | 6.6 | 18.0 |
| 10 | S15 | 5.2 | 18.0 |
| 12 | CLS15 | 5.2 | 10.2 |



| | | |
|----------------|---|--------------------------------|
| R. máx. | En servicio In operation En service In Betrieb | 3XR52 198,580 lbs. |
| | | 5XR72 210,920 lbs. |

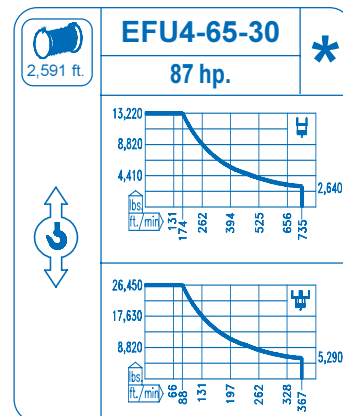
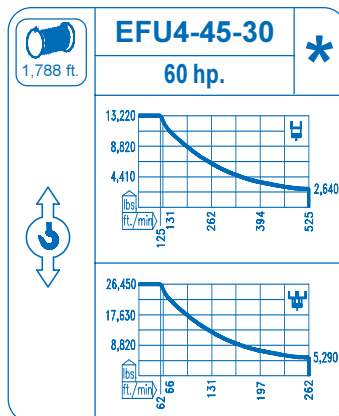
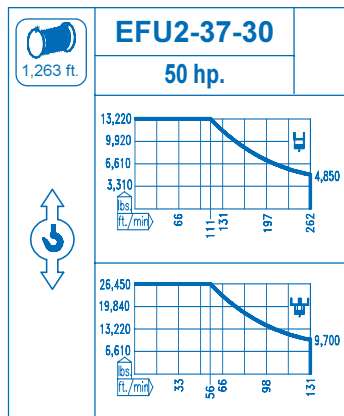
| | | |
|----------------|---|---------------------------------|
| R. máx. | Fuera de servicio Out of service Hors service Ausser Betrieb | 3XR52 208,060 lbs. |
| | | 5XR72 295,340 lbs. |

CFU-7.5
10 hp.
0 ⇄ 308 ft./min

GR-12
2 x 88 ft.lbs.
0 ⇄ 0.8 rpm

TRA-7.5
2 x 55 ft.lbs.
0 ⇄ 78 ft./min

TRA-7.5VC
2 x 55 ft.lbs.
0 ⇄ 78 ft./min
5XR72



| | |
|--|---|
| Tensión de alimentación Operating voltage Tension de service Betriebsspannung | 480 V 3 ph 60 Hz |
|--|---|

| | |
|---|----------|
| Opcional Optional En option Kaufoption | * |
|---|----------|