

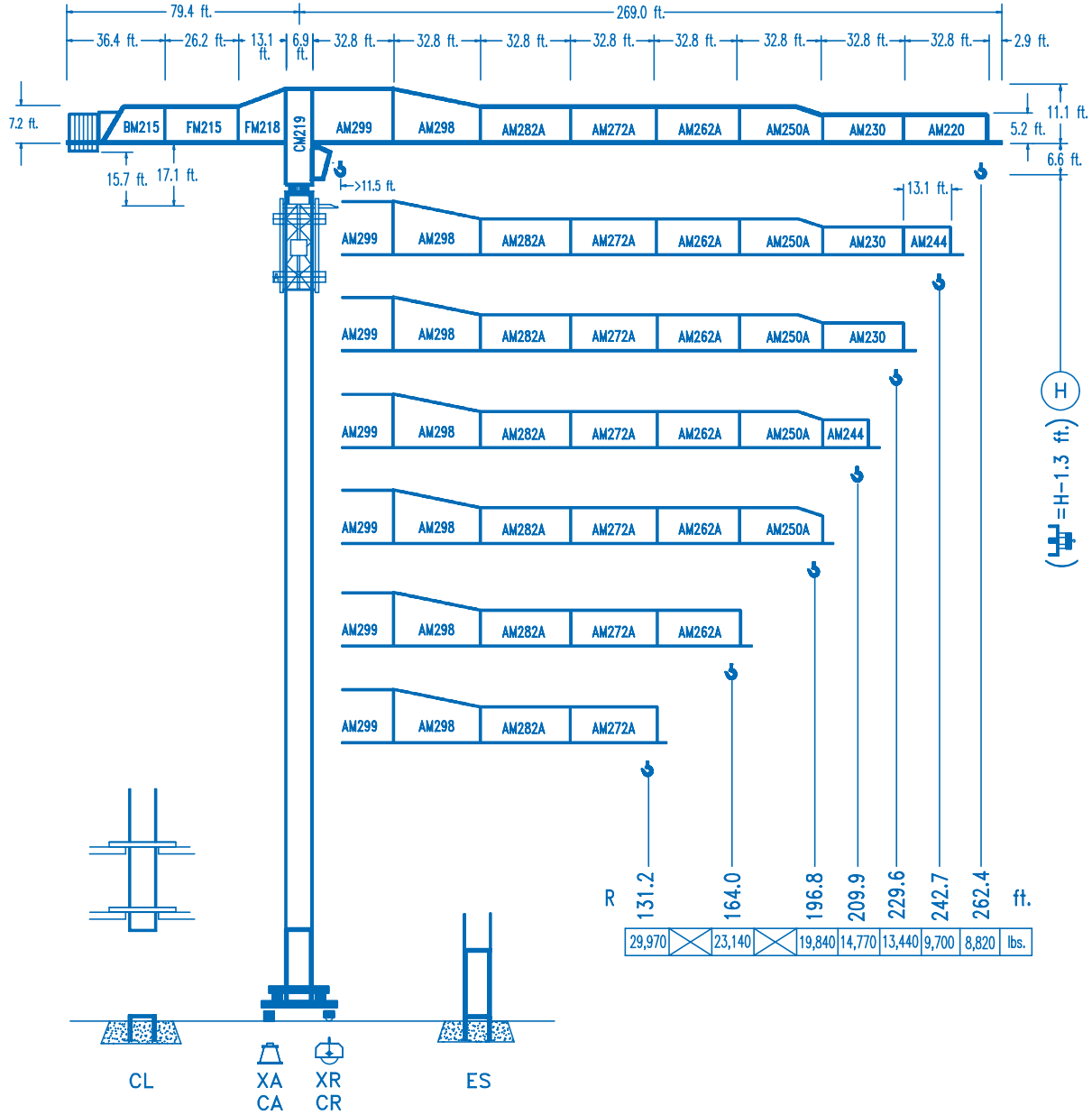


**COMANSA**

**LINDEN 2100**

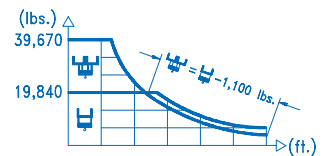
**21 LC 550**

**39,670 lbs.**



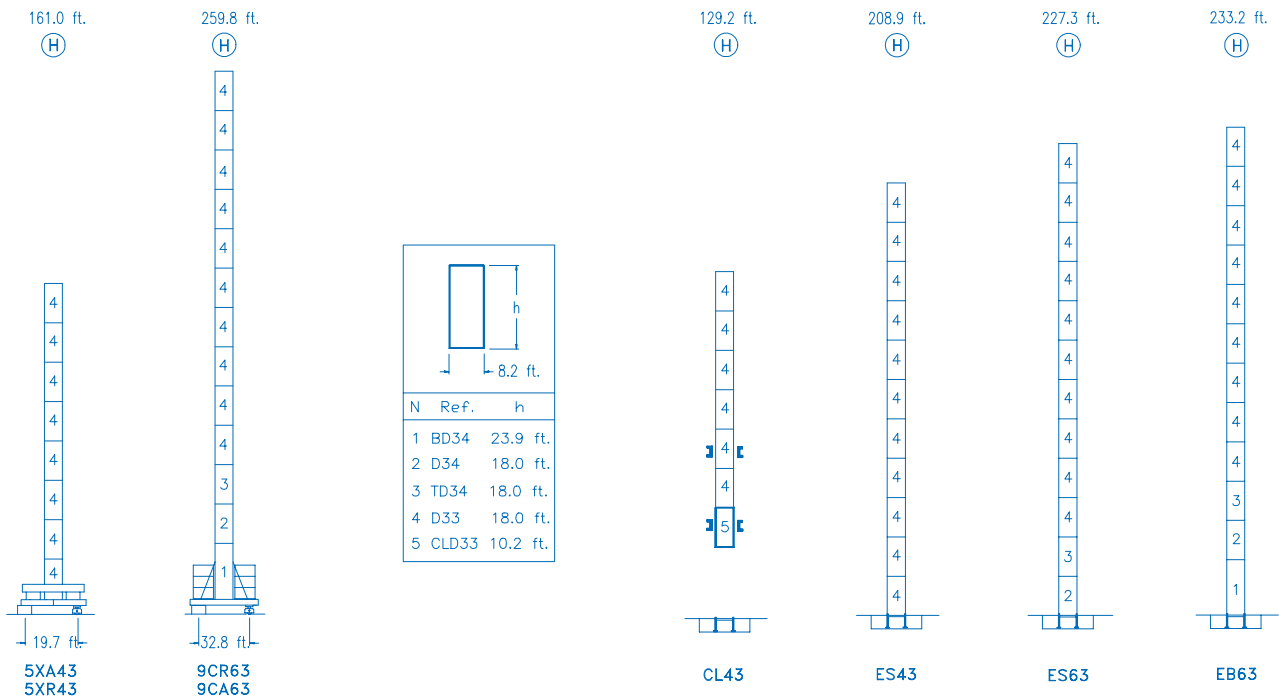
**CE**  
DIN 15018 H1 B3

R	⊞				⊞									
262.4	67.6	78.7	98.4	123.7	126.9	144.3	164.0	177.1	196.8	209.9	229.6	242.7	262.4	ft.
	39,670	33,440	25,900	19,840	19,840	17,250	14,980	13,750	12,230	11,370	10,270	9,640	8,820	lbs.
242.7	67.6	78.7	98.4	123.7	127.6	144.3	164.0	177.1	196.8	209.9	229.6	242.7	ft.	
	39,670	33,430	25,890	1,840	19,840	17,330	15,060	13,830	12,300	11,440	10,340	9,700	lbs.	
229.6		84.0	98.4	111.5	131.2	153.8	161.0	177.1	196.8	209.9	229.6	ft.		
		39,670	33,140	28,750	23,870	19,840	19,840	17,880	15,930	14,840	13,440	lbs.		
209.9		83.0	98.4	111.5	131.2	152.5	160.4	177.1	196.8	209.9	ft.			
		39,670	32,810	28,460	23,630	19,840	19,840	17,790	15,860	14,770	lbs.			
196.8			100.7	111.5	131.2	144.3	164.0	185.3	196.8	ft.				
			39,670	35,360	29,470	26,460	22,870	19,840	19,840	lbs.				
164.0			100.4	111.5	131.2	144.3	164.0	ft.						
			39,670	35,260	29,390	26,380	23,140	lbs.						
131.2			100.4	111.5	131.2	ft.								
			39,670	35,310	29,970	lbs.								



**DS.0406.32**

12/05 Reserva de modificaciones.- Subject to modifications.- Modifications réservées.- Konstruktionsänderungen vorbehalten.



**R. máx.** En servicio  
In operation  
En service  
In Betrieb

**5XR43 ... 330,600 lbs.**  
**9CR63 ... 244,640 lbs.**

**R. máx.** Fuera de servicio  
Out of service  
Hors service  
Ausser Betrieb

**5XR43 .... 297,540 lbs.**  
**9CR63 .... 315,170 lbs.**

**CFU-7.5**  
**10 hp.**

0 ↻ 308 ft./min

**GR-12**  
**4 x 88 ft.lbs.**

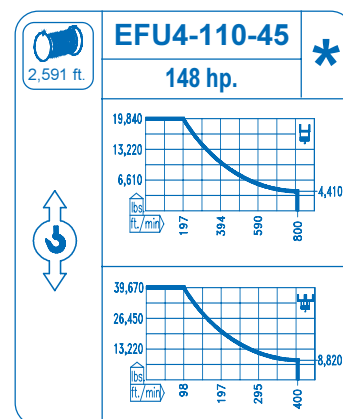
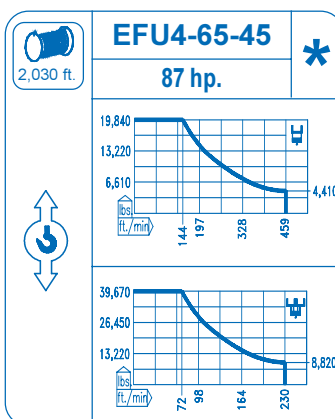
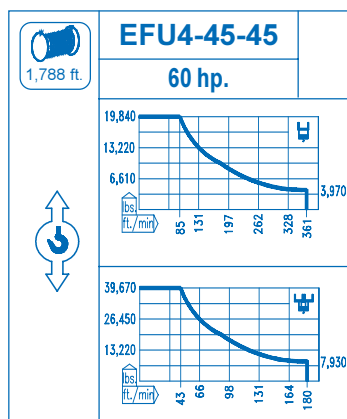
0 ↻ 0.8 rpm

**TRA-7.5**  
**2 x 55 ft.lbs.**

0 ↻ 78 ft./min

**TRA-7.5VC**  
**2 x 55 ft.lbs.**

0 ↻ 78 ft./min



Tensión de alimentación  
Operating voltage  
Tension de service  
Betriebsspannung

**480 V**  
**3 ph**  
**60 Hz**

Opcional  
Optional  
En option  
Kaufoption

**\***