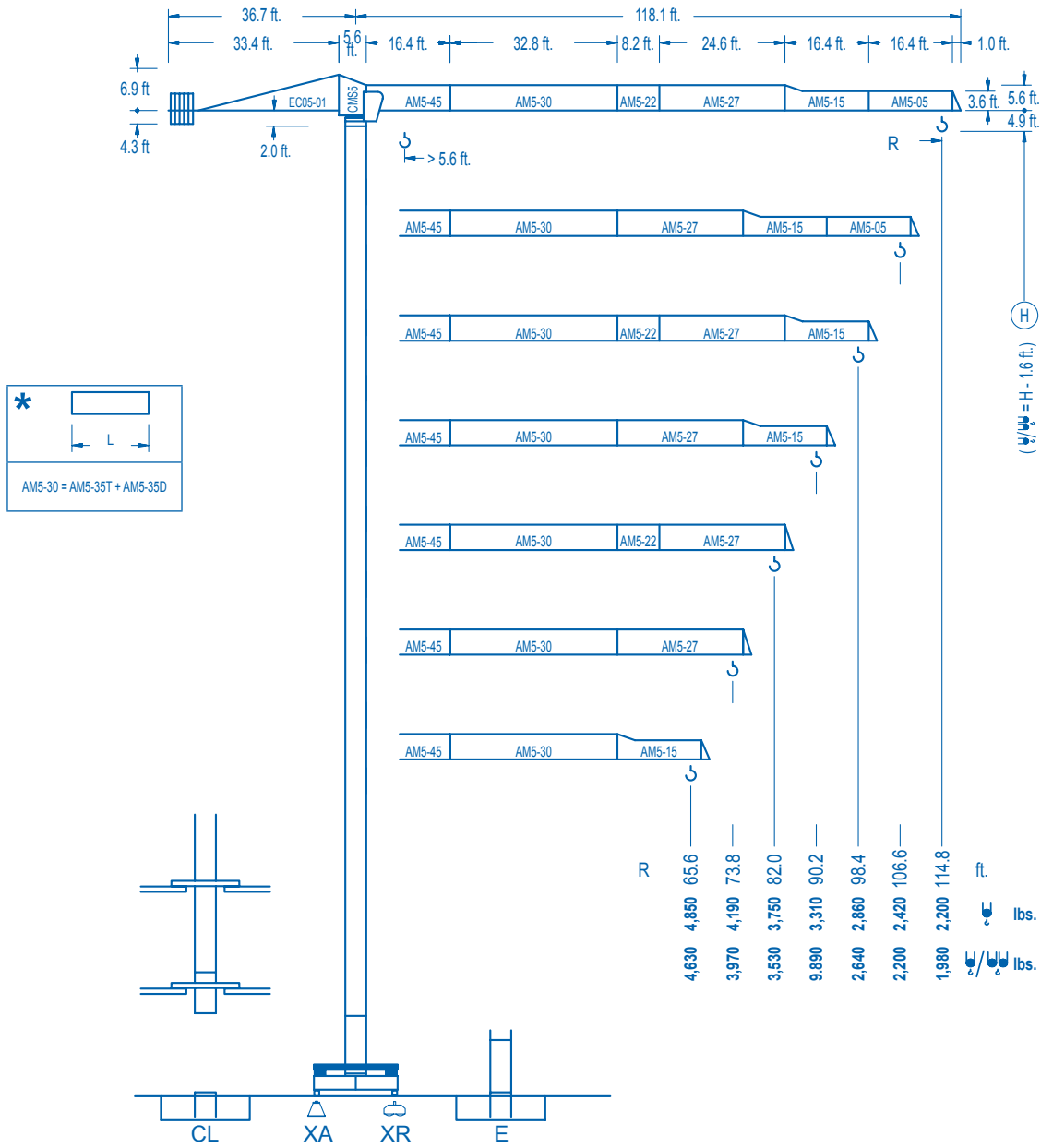


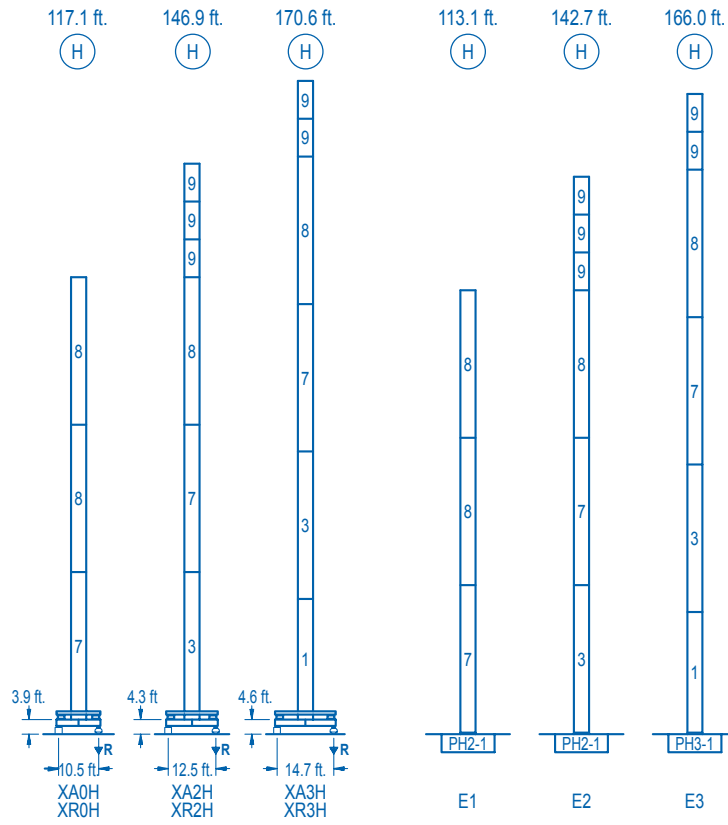
**LC 500**

**5 LC 3510**

**11,020 lbs.**



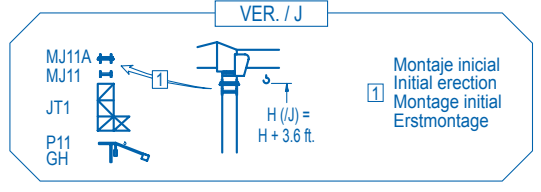
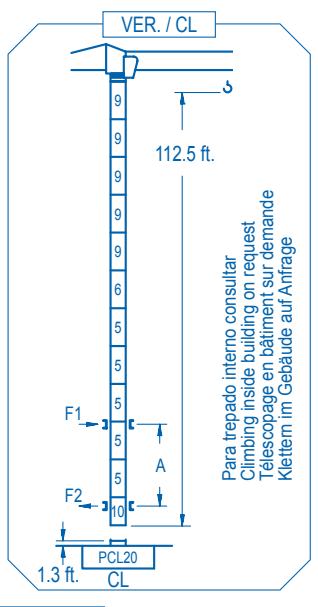
**CE EN 14439 (C/25)**



n°	Ref.	h
1	MT123	3.9 33.1
3	MH124A	3.9 38.7
5	MH121	3.9 9.8
6	MH121A	3.9 9.8
7	MH114A	3.9 38.7
8	MH114	3.9 38.7
9	MH111	3.9 9.8
10	CL20	3.9 2.2

MH114 = 4xMH111 - 0.6 ft.

H = H + 0.6 ft.  
 H = H  
 H = H  
 H = H - 0.6 ft.



	XA0H	XA2H	XA3H
A max	101.0	130.2	153.8
B max	- 68.9	- 68.9	- 68.9
C max	89.2	89.2	89.2
H max	190.2	259.1	288.3

	E1	E2	E3
A max	97.1	126.0	149.2
B max	- 68.9	- 68.9	- 68.9
C max	89.2	89.2	89.2
H max	186.3	255.2	284.1

<b>R. máx.</b>	En servicio	XR0H.....76,280 lbs.
	In operation	XR2H.....90,610 lbs.
	En service	XR3H.....99,430 lbs.
<b>R. máx.</b>	Fuera de servicio	XR0H...107,150 lbs.
	Out of service	XR2H...147,710 lbs.
	Hors service	XR3H...168,000 lbs.

Para otras zonas de viento o alturas superiores consultar  
 For other wind zones or additional hook heights on request  
 Pour d'autres zones de vent ou des hauteurs supplémentaires sur demande  
 Für andere Windzonen oder weiteren Hakenhöhen auf Anfrage

**CS2-1.9**  
3 hp.  
63 ft./min  
189 ft./min

**CFU-2.2**  
3 hp. \*  
0 ⇄ 262 ft./min

**GR-6.5**  
48 ft.lbs.  
0 ⇄ 0,9 rpm

**TS2-3.0** **TS2-4.5** **TS2-5.5**  
2x22 ft.lbs. 2x33 ft.lbs. 2x40 ft.lbs.  
0 ⇄ 78 ft./min  
XR0H XR2H XR3H

**ES3-18-12**  
820 ft. 29 hp.  
ft./min lbs. I II III  
32 126 252 5,510 5,510 2,860  
16 63 126 11,020 11,020 5,730

**ES3-13-12**  
740 ft. 21 hp. \*  
ft./min lbs. I II III  
24 94 189 5,510 5,510 2,860  
12 47 94 11,020 11,020 5,730

**EFU2-18-12**  
820 ft. 24 hp. \*  
ft./min lbs. I II III  
138 164 197 243 5,510 5,510 2,860  
88 88 88 121 11,020 11,020 5,730

**EFU2-11-12**  
740 ft. 15 hp. \*  
ft./min lbs. I II III  
78 98 131 164 190 5,510 5,510 2,860  
39 49 66 82 95 11,020 11,020 5,730

Tensión de alimentación	480 V
Operating voltage	3 ph
Tension de service	60 Hz
Betriebsspannung	

Opcional	*
Optional	
En option	
Kaufoption	