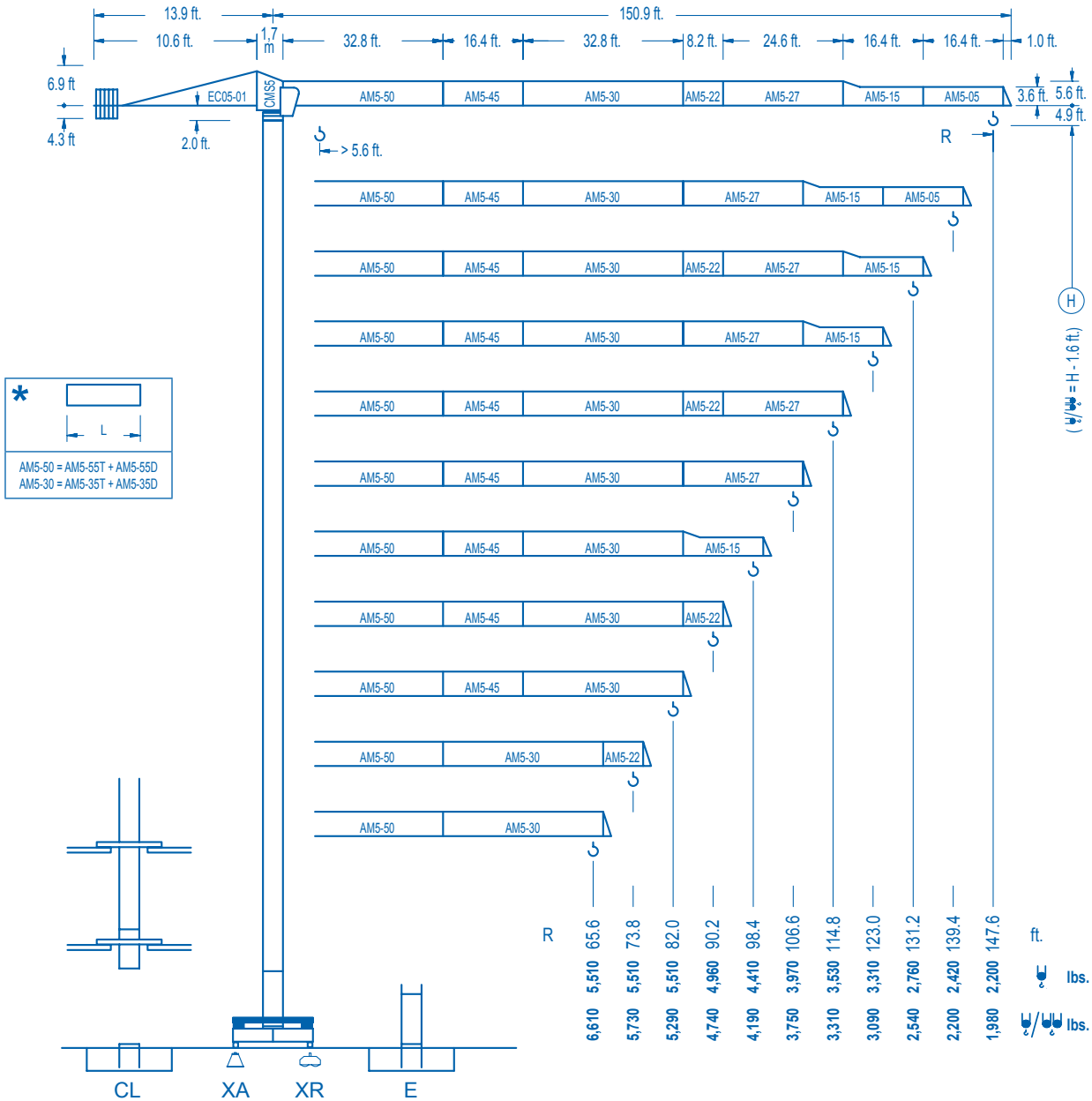


LC 500

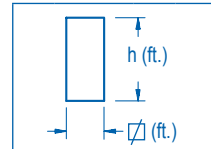
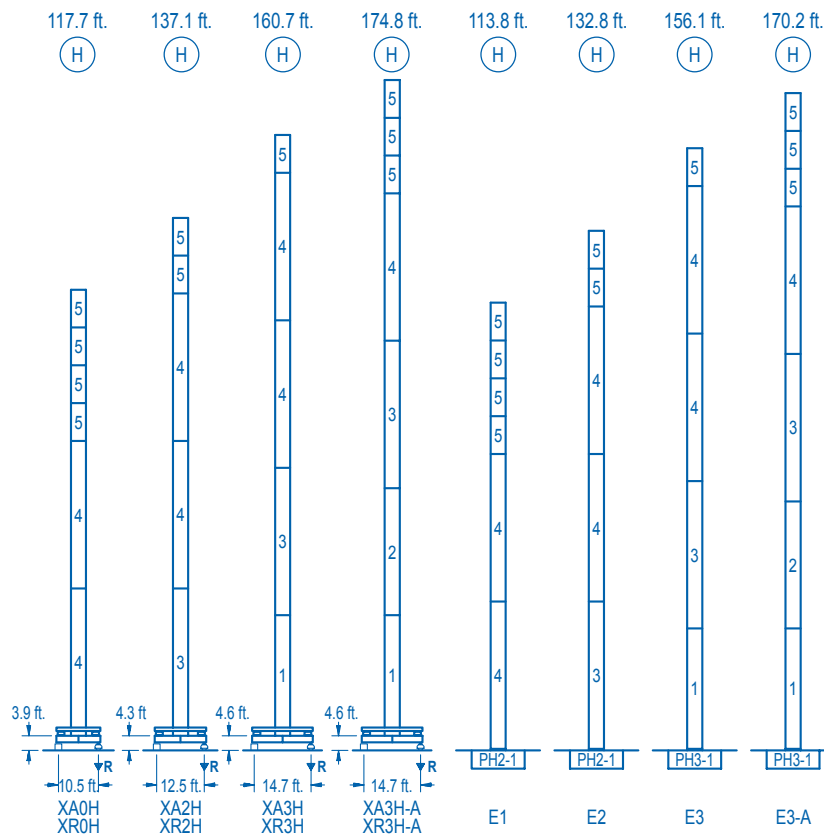
5 LC 4510

11,020 lbs.



CE EN 14439 (C/25)

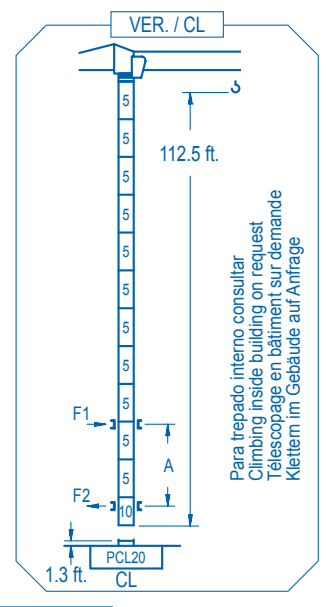
R (ft.)	W (lbs.)	RCmax (ft.)	32.8	41.0	49.2	57.4	65.6	73.8	82.0	90.2	98.4	106.6	114.8	123.0	131.2	139.4	147.6
147.6	36.4	11,020	9,610	7,780	6,500	5,580	4,850	4,250	3,790	3,390	3,060	2,800	2,560	2,340	2,160	1,980	
139.4	37.0	11,020	9,790	7,960	6,660	5,690	4,940	4,360	3,880	3,480	3,150	2,860	2,600	2,400	2,200		
131.2	38.4	11,020	10,270	8,330	6,990	5,970	5,200	4,590	4,080	3,660	3,310	3,020	2,760	2,540			
123.0	42.0		11,020	9,170	7,690	6,590	5,750	5,070	4,520	4,080	3,700	3,370	3,090				
114.8	42.6		11,020	9,020	7,560	6,480	5,640	4,980	4,450	4,010	3,640	3,310					
106.6	42.3		11,020	9,280	7,780	6,680	5,820	5,140	4,590	4,140	3,750						
98.4	43.3		11,020	9,410	7,890	6,770	5,910	5,200	4,650	4,190							
90.2	43.3		11,020	9,570	8,020	6,880	6,000	5,310	4,740								
82.0	43.3		11,020	9,550	8,000	6,860	6,000	5,290									



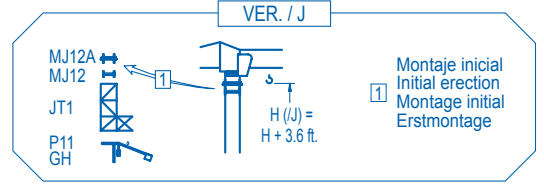
n°	Ref.	h
1	MT123	3.9 33.1
2	MT123A	3.9 33.1
3	MH124A	3.9 38.7
4	MH124-1	3.9 38.7
5	MH121	3.9 9.8
10	CL20	3.9 2.2

MH124-1 = 4xMH121 - 0.6 ft.

- H = H + 0.6 ft.
- H = H
- H = H
- H = H - 0.6 ft.



Para trepado interno consultar
Climbing inside building on request
Télescopage en bâtiment sur demande
Klettern im Gebäude auf Anfrage



Montaje inicial
Initial erection
Montage initial
Erstmontage

	XA0H	XA2H	XA3H	XA3H-A
A max	101.0	120.4	144.6	158.1
B max	- 68.9	- 68.9	- 68.9	- 68.9
C max	89.2	89.2	89.2	89.2
H max	190.2	259.1	209.6	278.5

	E1	E2	E3	E3-A
A max	97.1	116.1	140.0	153.5
B max	- 68.9	- 68.9	- 68.9	- 68.9
C max	89.2	89.2	89.2	89.2
H max	186.3	255.2	205.3	274.2

R. máx. En servicio
In operation
En service
In Betrieb

XR0H.....91,710 lbs.
XR2H.....91,710 lbs.
XR3H.....101,190 lbs.
XR3H-A.....113,320 lbs.

R. máx. Fuera de servicio
Out of service
Hors service
Ausser Betrieb

XR0H.....109,350 lbs.
XR2H.....136,250 lbs.
XR3H.....158,510 lbs.
XR3H-A.....187,400 lbs.

Para otras zonas de viento o alturas superiores consultar
For other wind zones or additional hook heights on request
Pour d'autres zones de vent ou des hauteurs supplémentaires sur demande
Für andere Windzonen oder weiteren Hakenhöhen auf Anfrage

CS2-1.9
3 hp.

63 ft./min
189 ft./min

CFU-2.2
3 hp. *

0 ⇄ 262 ft./min

GR-7.5
55 ft.lbs.

0 ⇄ 0,9 rpm

TS2-3.0 **TS2-4.5** **TS2-5.5**
2x22 ft.lbs. 2x33 ft.lbs. 2x40 ft.lbs.

0 ⇄ 78 ft./min

XR0H XR2H XR3H

ES3-18-12
820 ft. 29 hp.

	I	II	III
ft./min	32	126	252
lbs.	5,510	5,510	2,860

	I	II	III
ft./min	16	63	126
lbs.	11,020	11,020	5,730

ES3-13-12
740 ft. 21 hp. *

	I	II	III
ft./min	24	94	189
lbs.	5,510	5,510	2,860

	I	II	III
ft./min	12	47	94
lbs.	11,020	11,020	5,730

EFU2-18-12
820 ft. 24 hp. *

EFU2-11-12
740 ft. 15 hp. *

Tensión de alimentación
Operating voltage
Tension de service
Betriebsspannung

480 V
3 ph
60 Hz

Opcional
Optional
En option
Kaufoption



Tel.: (34) 948 335 020
Fax: (34) 948 330 810
e-mail: info@comansa.com
www.comansa.com

Polígono Urbizkain
E-31620 HUARTE-PAMPLONA.- SPAIN

DS.0952.08.IA 02/11 **5 LC 4510** 11,020 lbs.