

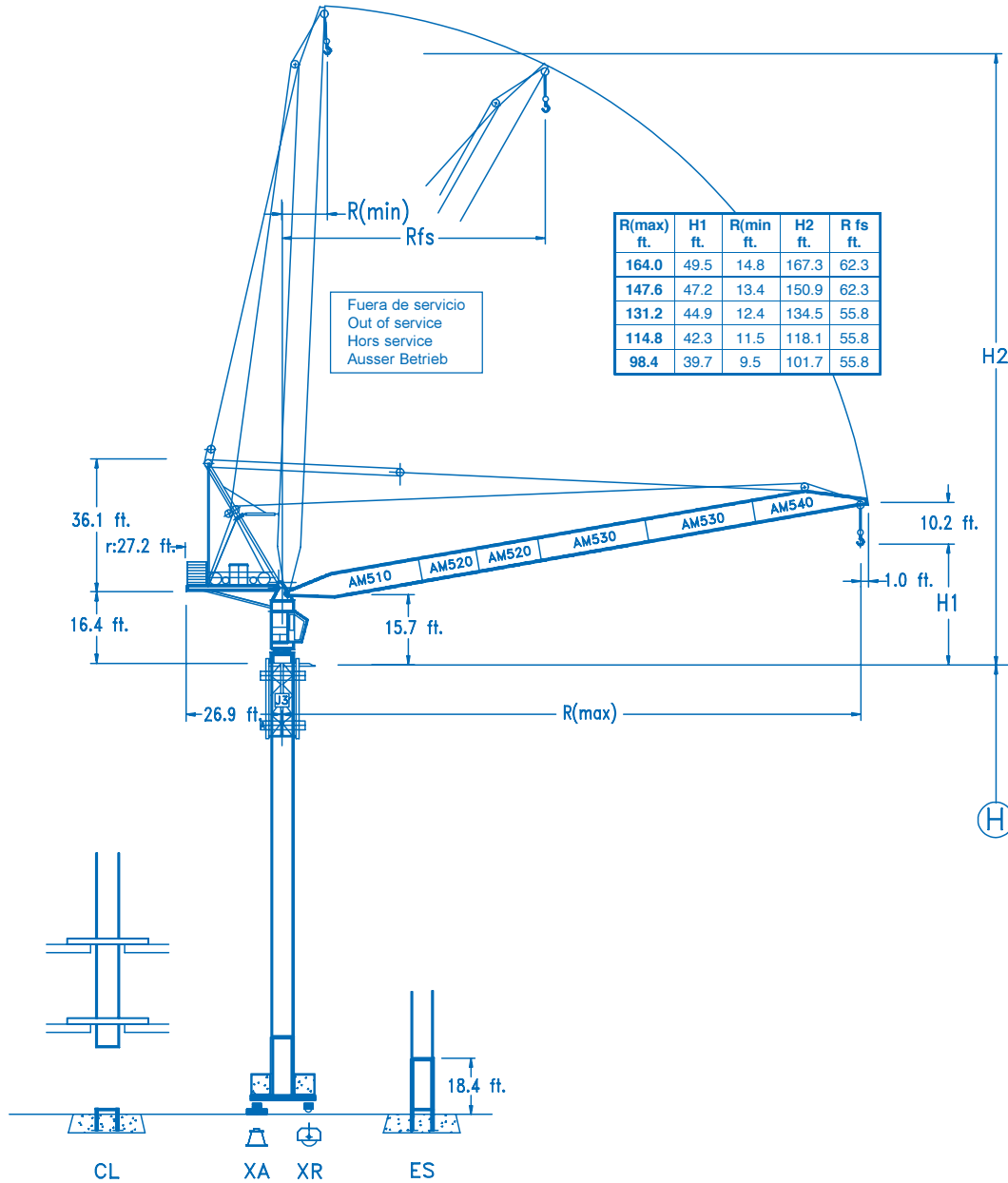


COMANSA

LCL

LCL-200

26,450 lbs.



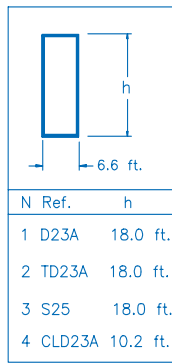
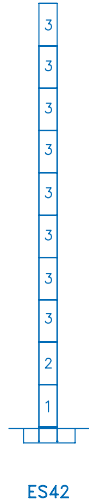
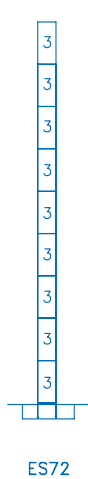
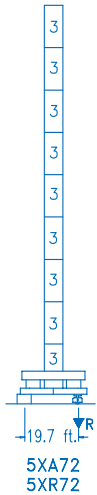
CE
DIN 15018 H1 B3

R														
164.0	67.6 26,450	72.2 24,200	82.0 19,700	88.6 17,650	98.4 15,230	105.3 13,220	114.8 11,660	121.4 10,800	131.2 9,670	137.8 9,040	147.6 8,200	154.2 7,690	164.0 6,610	ft. lbs.
147.6	65.6 26,450	72.2 23,410	82.0 19,570	88.6 17,790	98.4 15,600	107.9 13,220	114.8 12,210	121.4 11,390	131.2 10,310	137.8 9,670	147.6 8,820	ft. lbs.		
131.2	69.5 26,450	72.2 25,210	82.0 21,490	88.6 19,170	98.4 16,820	105.0 15,520	114.5 13,220	121.4 12,230	ft. lbs.					
114.8	67.2 26,450	72.2 24,570	82.0 21,490	88.6 19,460	98.4 17,410	105.0 16,240	114.8 14,770	ft. lbs.						
98.4	69.2 26,450	72.2 25,370	82.0 22,330	88.6 20,670	98.4 18,290	ft. lbs.								

(H)	(R)
ft.	ft.
168.6	98.4
150.5	114.8/131.2
132.5	147.6/164.0

(H)	(R)
ft.	ft.
162.7	98.4
144.6	114.8/131.2
126.6	147.6/164.0

(H)	(R)
ft.	ft.
180.7	98.4
162.7	114.8/131.2
144.6	147.6/164.0



VER./CL

(H)	(R)
ft.	ft.
154.8	98.4/114.8/131.2
136.8	147.6/164.0

	H [ft.]	P [lbs.]	T [lbs.]
(1)	154.8	226,570	37,470
(2)	138.8	219,300	35,260
(3)	118.7	212,020	34,160

CL42

R. máx. En servicio
In operation
En service
In Betrieb

5XR72 245,750 lbs.

R. máx. Fuera de servicio
Out of service
Hors service
Ausser Betrieb

5XR72 344,930 lbs.

AFU-45

60 hp.

2 min

GR-10

2 x 74 ft.lbs.

0 ⇄ 0,8 rpm

TRA-7.5

2 x 55 ft.lbs.

0 ⇄ 78 ft./min

TRA-7.5VC

2 x 55 ft.lbs.

0 ⇄ 78 ft./min

EFU4-45-30

60 hp.

1788 ft.

EFU4-65-30

87 hp.

2591 ft.

Tensión de alimentación
Operating voltage
Tension de service
Betriebsspannung

480 V
3 ph
60 Hz

Opcional
Optional
En option
Kaufoption
